

EXPLODED VIEW & PARTS LISTING

Air Operated Double Diaphragm Pump

Model: NDP-40BS[x]-BH2
STAINLESS STEEL POWDER PUMP
(rubber fitted)



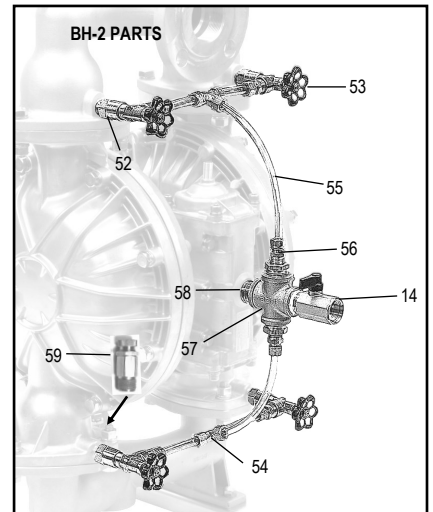
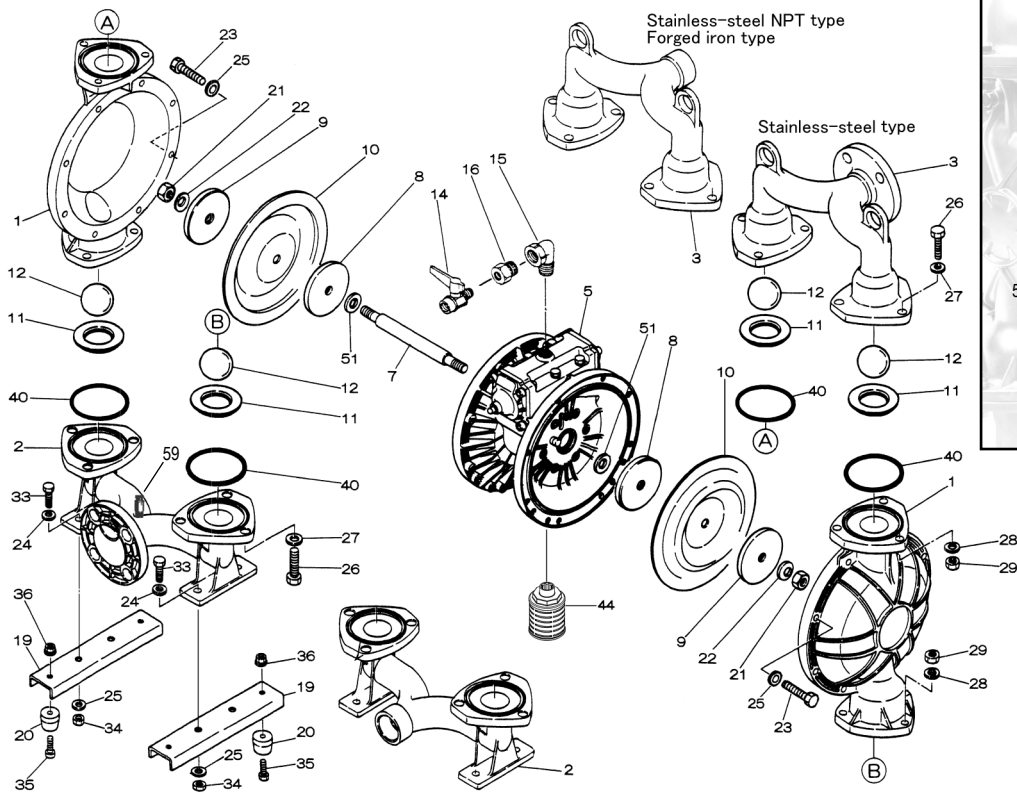
To Purchase:

- 800-990-7867
- sales@yamadapump.com
- Find My Rep

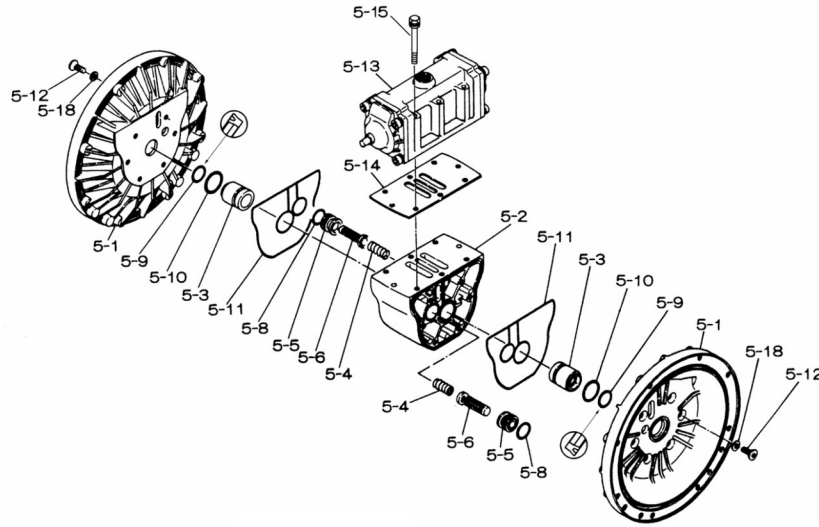
More Information:

- YouTube: @yamadapump
- yamadapump.com
- Data Sheets | CAD Drawings | Manuals Literature | BOM | Performance Curves

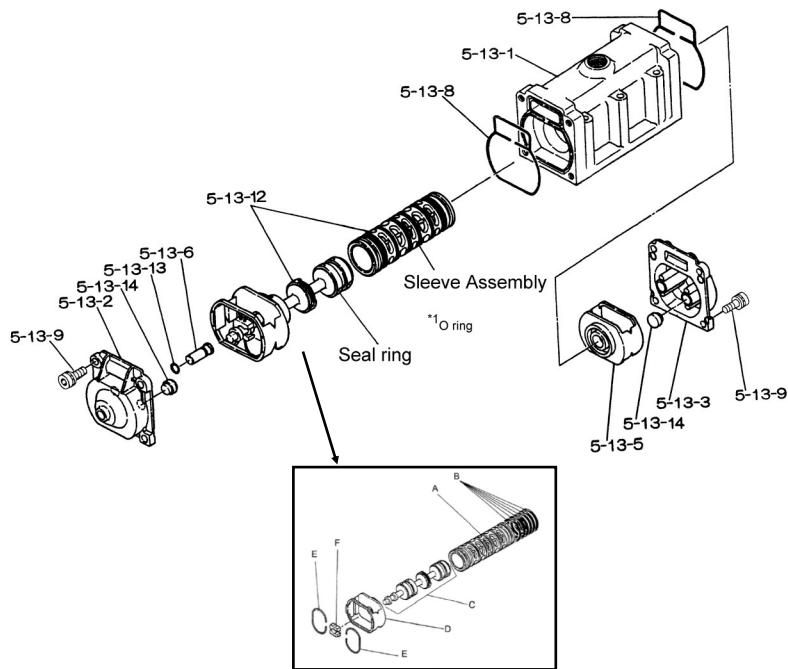
Trial Program



■Body Assembly



■Valve Body Assembly



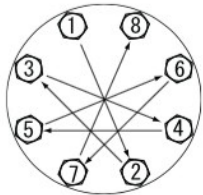


Air Operated Double Diaphragm Pump

	NDP-40BSC-BH-2	NDP-40BSN-BH-2	NDP-40BSE-BH-2	NDP-40BSH-BH-2	NDP-40BSS-BH-2	NDP-40BAV-BH-2	POWDER PUMPS		
NPT	852641-BH-2	852642-BH-2	852637-BH-2	852638-BH-2	852712-BH-2	852640-BH-2	** NPT **		
FLANGE	852419-BH-2	852420-BH-2	852223-BH-2	852224-BH-2	852710-BH-2	852301-BH-2	** FLANGE **		
Ref. No.	PARTS No.	PARTS No.	PARTS No.	PARTS No.	PARTS No.	PARTS No.	DESCRIPTION	QTY.	REORDER
1	712931	712931	712931	712931	712931	712931	OUT CHAMBER - BH	2	
2	712601	712601	712601	712601	712601	712601	IN MANIFOLD (NPT) - BH	1	
	712599	712599	712599	712599	712599	712599	IN MANIFOLD (FLANGE) - BH	1	
3	712600	712600	712600	712600	712600	712600	OUT MANIFOLD (NPT) - BH	1	
	712598	712598	712598	712598	712598	712598	OUT MANIFOLD (FLANGE) - BH	1	
5	803111	803111	803111	803111	803111	803111	CENTER BODY ASSY.	1	
5-1	711933	711933	711933	711933	711933	711933	AIR CHAMBER	2	
5-2	711936	711936	711936	711936	711936	711936	BODY	1	
5-3	780325	780325	780325	780325	780325	780325	THROAT BEARING	2	
5-4	711937	711937	711937	711937	711937	711937	PILOT VALVE SPRING	2	
5-5	771740	771740	771740	771740	771740	771740	PILOT VALVE SEAT	2	
5-6	832162	832162	832162	832162	832162	832162	PILOT VALVE ASSY	2	
5-8	640020	640020	640020	640020	640020	640020	O-RING	2	
5-9	685444	685444	685444	685444	685444	685444	V-PACKING	2	
5-10	640029	640029	640029	640029	640029	640029	O-RING	2	
5-11	771742	771742	771742	771742	771742	771742	GASKET	2	
5-12	683812	683812	683812	683812	683812	683812	FLAT SOCKET BOLT	12	
5-13	802971	802971	802971	802971	802971	802971	VALVE BODY ASSY.	1	
5-13-1	711931	711931	711931	711931	711931	711931	VALVE BODY	1	
5-13-2	580999	580999	580999	580999	580999	580999	CAP A	1	
5-13-3	581000	581000	581000	581000	581000	581000	CAP B	1	
5-13-5	771735	771735	771735	771735	771735	771735	SPRING RETAINER	1	
5-13-6	712976	712976	712976	712976	712976	712976	RESET BUTTON	1	
5-13-8	771738	771738	771738	771738	771738	771738	GASKET	2	
5-13-9	685036	685036	685036	685036	685036	685036	SOCKET BOLT W/ WASHER	8	
5-13-12	805084	805084	805084	805084	805084	805084	C SPOOL ASSY.	1	
A	803675	803675	803675	803675	803675	803675	SLEEVE ASSY.	1	
B	640036	640036	640036	640036	640036	640036	O-RING	6	
C	805085	805085	805085	805085	805085	805085	SPOOL ASSY.	1	
D	771735	771735	771735	771735	771735	771735	SPRING RETAINER	1	
E	711932	711932	711932	711932	711932	711932	C-SPRING	2	
F	771734	771734	771734	771734	771734	771734	BLOCK	1	
5-13-13	640005	640005	640005	640005	640005	640005	O RING	1	
5-13-14	684128	684128	684128	684128	684128	684128	CUSHION	4	
5-14	771712	771712	771712	771712	771712	771712	GASKET	1	
5-15	684240	684240	684240	684240	684240	684240	BOLT W/ WASHER	6	
5-18	684987	684987	684987	684987	684987	684987	WASHER	12	
7	711900	711900	711900	711900	711900	711900	CENTER ROD	1	
8	711902	711902	711902	711902	711902	711902	CENTER DISK	2	
9	711903	711903	711903	711903	711903	711903	CENTER DISK	2	
10	771853	771854	771700	771701	771975	771799	DIAPHRAGM	2	
11	771956	771921	771994	771793	772003	771997	VALVE SEAT	4	
12	770550	770593	770584	773142	773172	770602	BALL	4	
14	686972	686972	686972	686972	686972	686972	BALL VALVE 1/2"	1	
15	682523	682523	682523	682523	682523	682523	ELBOW	1	
16	684339	684339	684339	684339	684339	684339	BUSHING	1	
19	711911	711911	711911	711911	711911	711911	BASE	2	
20	771402	771402	771402	771402	771402	771402	FOOT RUBBER	4	
21	683408	683408	683408	683408	683408	683408	NUT	2	
22	682740	682740	682740	682740	682740	682740	WASHER	2	
23	621180	621180	621180	621180	621180	621180	BOLT	16	
24	631174	631174	631174	631174	631174	631174	FLAT WASHER	4	
25	631937	631937	631937	631937	631937	631937	WAVE WASHER	20	
26	621202	621202	621202	621202	621202	621202	BOLT	12	
27	631175	631175	631175	631175	631175	631175	FLAT WASHR	12	
28	631938	631938	631938	631938	631938	631938	WAVE WASHER	12	
29	628014	628014	628014	628014	628014	628014	NUT	12	
33	621175	621175	621175	621175	621175	621175	BOLT	4	
34	628013	628013	628013	628013	628013	628013	NUT	4	
35	611149	611149	611149	611149	611149	611149	BOLT	4	

Air Operated Double Diaphragm Pump

	NDP-40BSC-BH-2	NDP-40BSN-BH-2	NDP-40BSE-BH-2	NDP-40BSH-BH-2	NDP-40BSS-BH-2	NDP-40BAV-BH-2	POWDER PUMPS		
NPT	852641-BH-2	852642-BH-2	852637-BH-2	852638-BH-2	852712-BH-2	852640-BH-2	** NPT **		
FLANGE	852419-BH-2	852420-BH-2	852223-BH-2	852224-BH-2	852710-BH-2	852301-BH-2	** FLANGE **		
Ref. No.	PARTS No.	PARTS No.	PARTS No.	PARTS No.	PARTS No.	PARTS No.	DESCRIPTION	QTY.	REORDER
36	682276	682276	682276	682276	682276	682276	NUT W/ FLANGE	4	
40	640065	683999	640065	640065	683999	642065	O-RING	4	
44	804764	804764	804764	804764	804764	804764	SILENCER	1	
51	770582	770582	770582	770582	770582	770582	CUSHION	2	
52	7768K23	7768K23	7768K23	7768K23	7768K23	7768K23	CHECK VALVE	4	
53	45065K32	45065K32	45065K32	45065K32	45065K32	45065K32	TRUCK VALVE	4	
54	5220K139	5220K139	5220K139	5220K139	5220K139	5220K139	TEE CONNECTOR	2	
55	8359K16	8359K16	8359K16	8359K16	8359K16	8359K16	NYLON TUBING 5FT.	1	
56	4429K418	4429K418	4429K418	4429K418	4429K418	4429K418	BUSHING	2	
57	4429K354	4429K354	4429K354	4429K354	4429K354	4429K354	CROSS	1	
58	4568K191	4568K191	4568K191	4568K191	4568K191	4568K191	NIPPLE	1	
59	48935K35	48935K35	48935K35	48935K35	48935K35	48935K35	VACUUM RELIEF VALVE	1	
KIT	K40-MC	K40-MN	K40-ME	K40-MH	K40-MS	K40-MV	LIQUID END KIT		
KIT	K45-AM						AIR MOTOR KIT		



Tightening torque for center rod and out chambers.

Center Rod 43 ft-lbf {60 N-m}
 Out Chambers 29 ft-lbf {40 N-m}

Tightening torque for manifold retainer bolts.

BFC/E/H/N/S/V 18 ft-lbf {25 N-m}

General Tools:

- Socket wrenches - 13mm, 17mm, 19mm, 24mm
- Hexagonal box wrench - 5mm, 6mm
- Small crowbars - 2
- Open-end wrenches - 24mm
- Plastic hammer

Special Tools (sold separately):

- Sleeve remover (713180)

Miscellaneous:

- Turbine oil Class 1 (equivalent ISO VG32 grade)
- Nuts - M16 x 1.5
- Thread locker
- Urea grease grade (NLGI) No. 2

Customer Notes	
Model #:	_____
Description:	_____
Serial #:	_____
Date Installed:	_____
Department Location:	_____
Tag/Project:	_____