

EXPLODED VIEW & PARTS LISTING

Air Operated Double Diaphragm Pump

Model: NDP-25BAU-PP

Model #: 854126-U



To Purchase:

☎ 800-990-7867

✉ sales@yamadapump.com

📍 Find My Rep

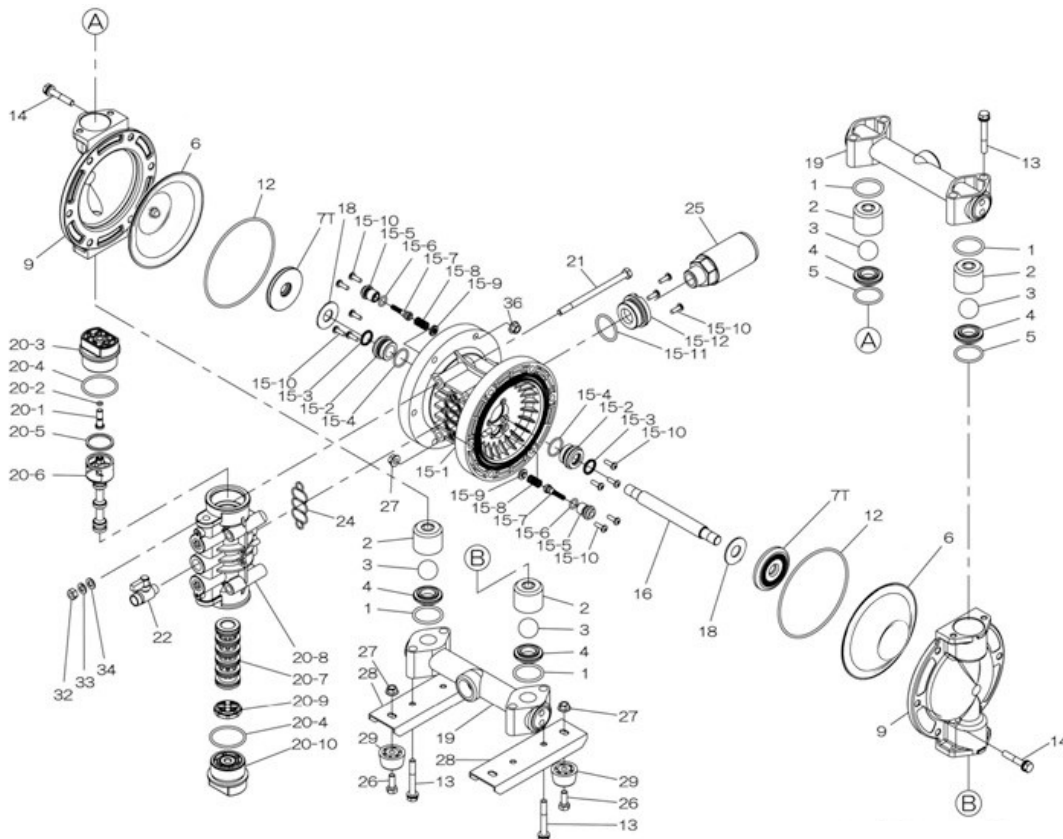
More Information:

▶ YouTube: @yamadapump

🌐 yamadapump.com

Data Sheets | CAD Drawings | Manuals
Literature | BOM | Performance Curves

Trial Program



Air Operated Double Diaphragm Pump

REF. No.	PART No.	DESCRIPTION	QTY	REORDER
1	643044	O RING	4	
2	711702	BALL GUIDE	4	
3	770691	BALL	4	
4	590087	VALVE SEAT	4	
5	771130	O RING	2	
6	832584	DIAPHRAGM	2	
7T	772620	CENTER DISK	2	
9	711687	OUT CHAMBER	2	
12	640154	O RING	2	
13	686364	BOLT & WASHER	8	
14	686395	BOLT & WASHER	12	
15	804604	BODY ASSY	1	
15-1	772929	BODY	1	
15-2	780326	THROAT BEARING	2	
15-3	685414	PACKING	2	
15-4	685276	O RING	2	
15-5	772932	VALVE SEAT	2	
15-6	640009	O RING	2	
15-7	802360	PILOT VALVE ASSY	2	
15-8	708666	SPRING	2	
15-9	772948	SPRING SEAT	2	
15-10	686030	TAPPING SCREW	13	
15-11	640132	O RING	1	
15-12	772933	BUSHING	1	
16	714812	CENTER ROD	1	
18	771054	CUSHION	2	
19	831281	MANIFOLD	2	
20	804608	VALVE BODY ASSY	1	
20-1	772991	RESET BUTTON	1	
20-2	640002	O RING	1	
20-3	772946	CAP A	1	
20-4	640043	O RING	2	
20-5	771241	PACKING	1	
20-6	802400	C SPOOL ASSY	1	
20-6 seal	771053	SEAL RING	5	
20-7	804609	SLEEVE ASSY	1	
20-7-*1	686029	O RING	6	
20-8	832903	VALVE BODY ASSY	1	
20-9	771914	CUSHION	1	
20-10	772947	CAP B	1	
21	686031	BOLT	4	
22	686970	VALVE	1	
24	772848	GASKET	1	
25	804697	MUFFLER	1	
26	611148	BOLT	4	
27	682276	FLANGED NUT	4	
28	709156	BASE	2	
29	770551	RUBBER FOOT	4	
32	683635	NUT	4	
33	681300	SPRING WASHER	4	
34	631329	PLAIN WASHER	4	
36	686034	FLANGED NUT	12	
KIT	K25-MU-1	LIQUID END KIT		
KIT	K225-AP	AIR MOTOR KIT		

General Tools:

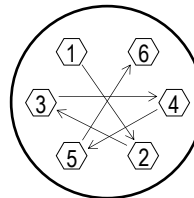
- Socket wrenches - 10mm, 12mm, 13mm, 17mm, 22mm
- Hexagonal box wrench - 5mm
- Open-end wrenches - 22mm

Special Tools:

- Sleeve remover (713148) (sold separately).

Miscellaneous:

- Assembly Oil - turbine oil none additional class 1 (equivalent to ISO VG32 grade)
- Urea grease grade (NLGI) No. 2
- Lubricants - equivalent to Loctite Anti-Seize 767



Tightening torque:

Out Chambers
Manifold Retainer Bolts

15 ft-lbf {20 N-m}
25 ft-lbf {35 N-m}

Customer Notes

Model #: _____
Description: _____
Serial #: _____
Date Installed: _____
Department Location: _____
Tag/Project: _____